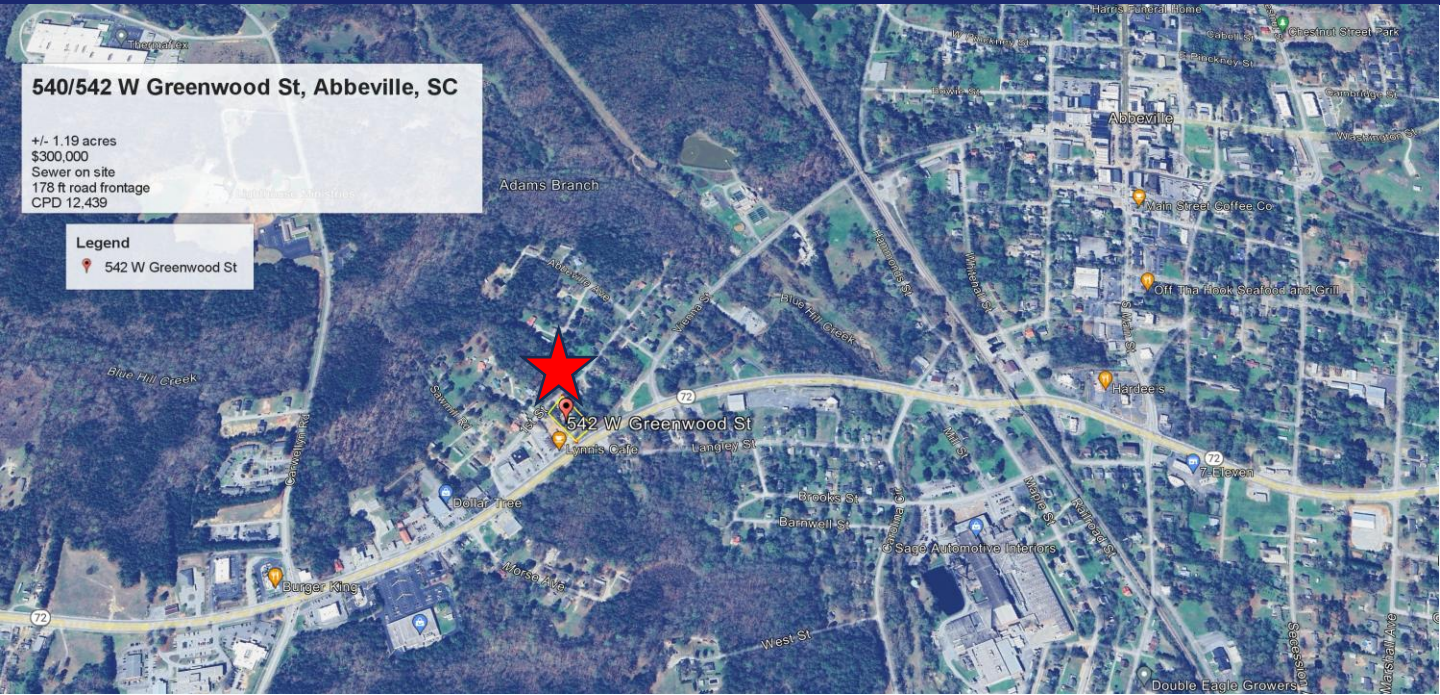


1.19+/- Acres Commercial Land for Sale

540 & 542 W Greenwood St, Abbeville, SC



Retail corridor in Abbeville. Flat Topo. Great for development or investment.

Property Features:


- 178 ft frontage on Hwy 72, W Greenwood St.
- Sewer, water in place. Zoned C-1. CPD 12,439
- Combines 540 and 542 W. Greenwood St.
- 3 income producing rentals w/ tenants in place.
- Tax map ID's: 122-05-01-017 & 122-05-01-018
- 5 mile population 8,811

CONTACT

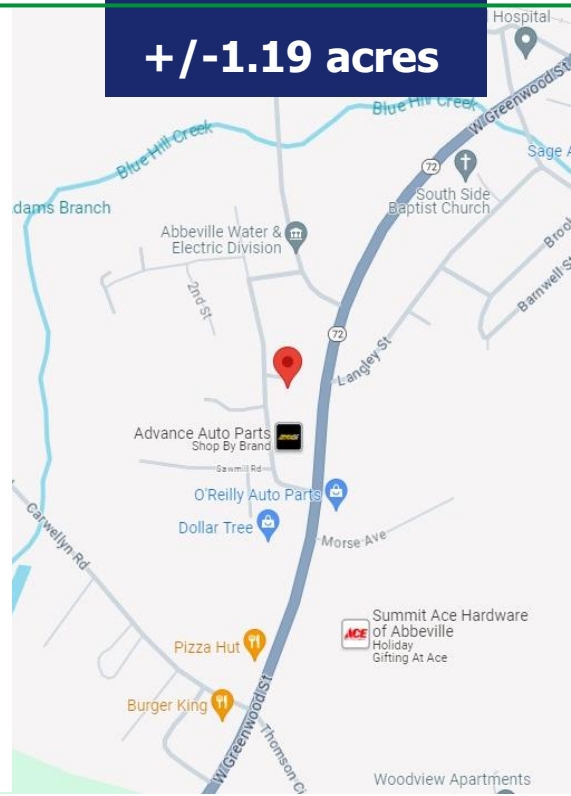
Chad Roache
864.275-0477
chad@spencerhines.com

WWW.SPENCERHINES.COM

COMMERCIAL REAL ESTATE SALES, LEASING, & INVESTMENTS
380 S. Pine Street, Spartanburg, SC 29302 - 864.583.1001

No warranty or representation, expressed or implied, is made to the accuracy of the information contained herein, and the same is submitted subject to errors, omissions, change of price, rental or other conditions, imposed by the principles. 

\$300,000
+/-1.19 acres



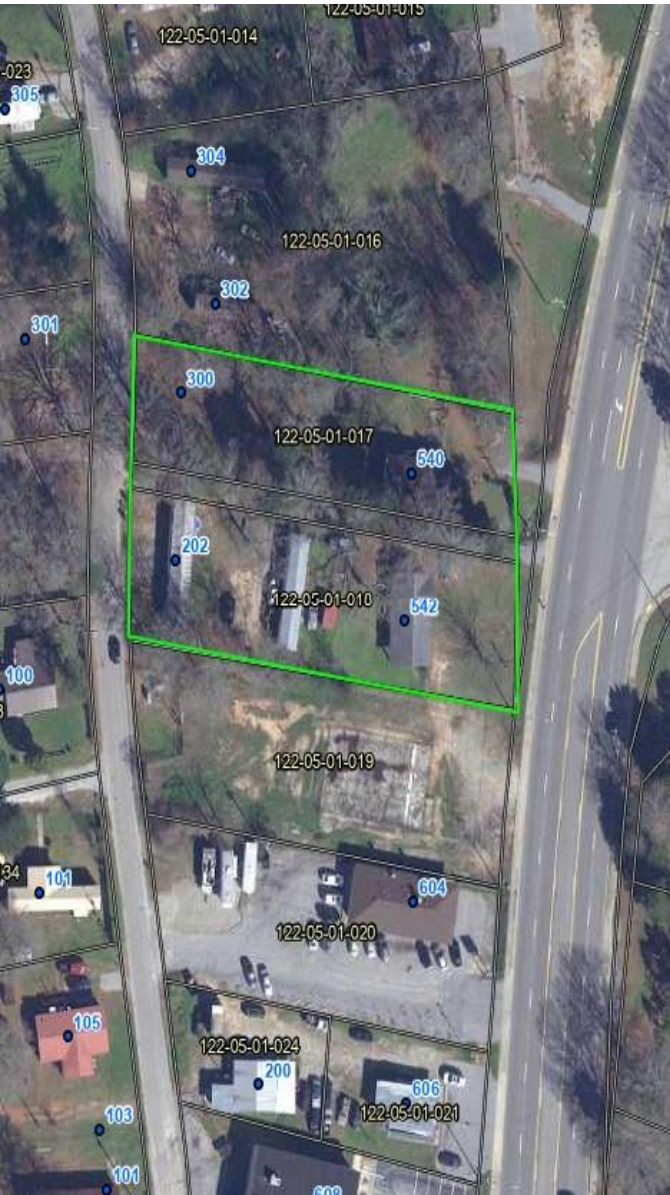


SPENCER/HINES
P R O P E R T I E S

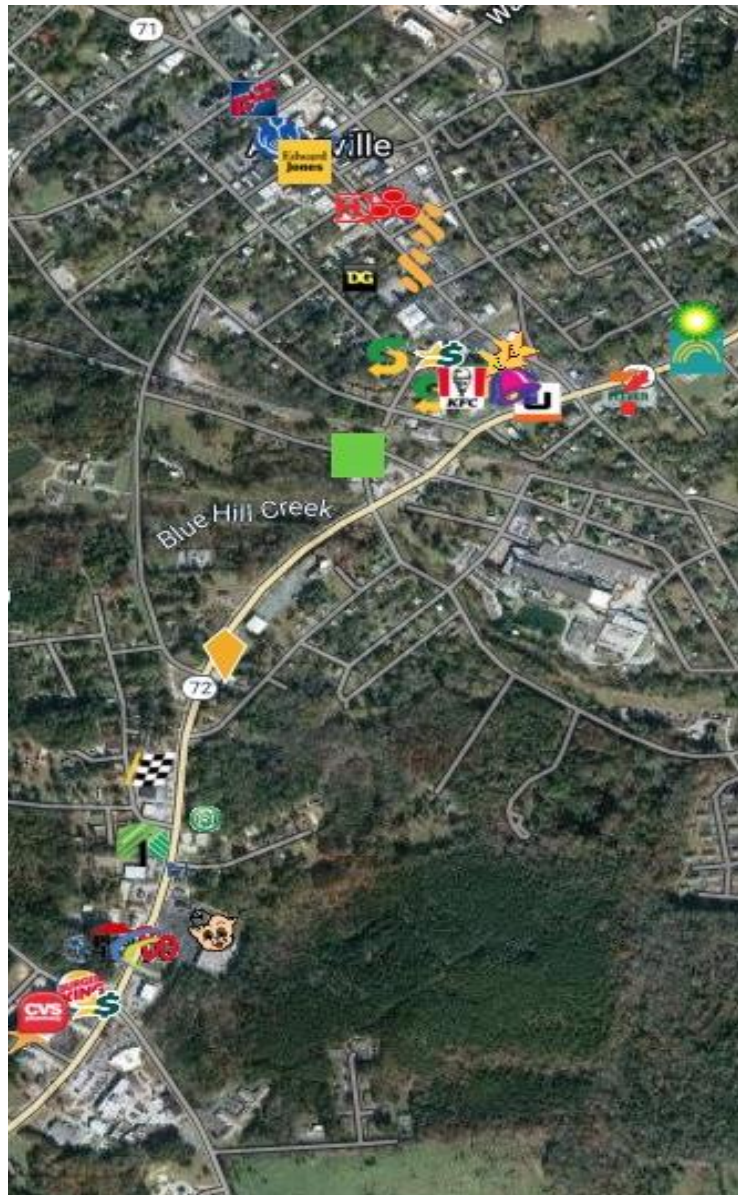
1.19+/- Acres Commercial Land for Sale

540 & 542 W Greenwood St, Abbeville, SC

GIS Aerial



Surrounding Area



WWW.SPENCERHINES.COM

COMMERCIAL REAL ESTATE SALES, LEASING, & INVESTMENTS
380 S. Pine Street, Spartanburg, SC 29302 -
864.583.1001



No warranty or representation, expressed or implied, is made to the accuracy of the information contained herein, and the same is submitted subject to errors, omissions, change of price, rental or other conditions, imposed by the principles.

CONTACT:

Chad Roache
864.275.0477

chad@spencerhines.com

Property Photos



View from corner of 540



1400sf home



540 from Hwy 72



View from mid property



View from 1st St

WWW.SPENCERHINES.COM

COMMERCIAL REAL ESTATE SALES, LEASING, & INVESTMENTS
380 S. Pine Street, Spartanburg, SC 29302 -
864.583.1001



No warranty or representation, expressed or implied, is made to the accuracy of the information contained herein, and the same is submitted subject to errors, omissions, change of price, rental or other conditions, imposed by the principles.

CONTACT:

Chad Roache
864.275.0477

chad@spencerhines.com