



SPENCER/HINES PROPERTIES

COMMERCIAL REAL ESTATE SALES LEASING, & INVESTMENTS
500 E. NORTH STREET, SUITE F, GREENVILLE, SC 29601

OFFICE/RETAIL SPACE FOR LEASE

+/- 2,700 SF

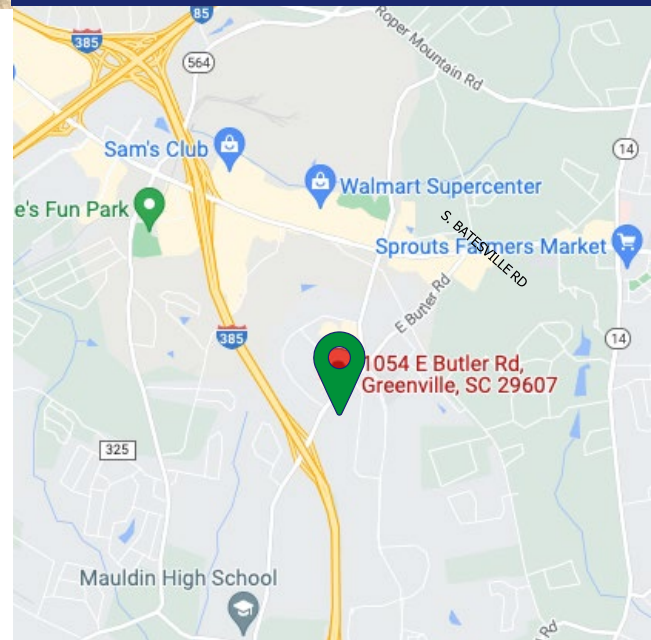
1054 E. BUTLER ROAD, GREENVILLE, SC 29607



LEASE RATE:
\$23.00/SF + NNN

RECENTLY RENOVATED SPACE ON E. BUTLER ROAD FOR LEASE

- NEWLY REMODELED SPACE WITH OPEN FLOORPLAN
- LAYOUT INCLUDES:
 - CONFERENCE ROOM, LOBBY AREA
 - PRIVATE OFFICES AND OPEN FLOORPLAN
 - 2 BATHROOMS
 - BREAKROOM AND STORAGE AREA
- ONSITE PARKING AND MONUMENT SIGNAGE
- FINISHES INCLUDE HARDWOOD FLOORS, LED LIGHTING, EXPOSED CEILING, ETC.
- NNN ESTIMATE: \$5.00/SF



BOBBY HINES | (864) 313-4815
BOBBYHINES@SPENCERHINES.COM

No warranty or representation, expressed or implied, is made to the accuracy of the information contained herein, and the same is submitted subject to errors, omissions, change of price, rental or other conditions, imposed by the principles.





SPENCER/HINES PROPERTIES

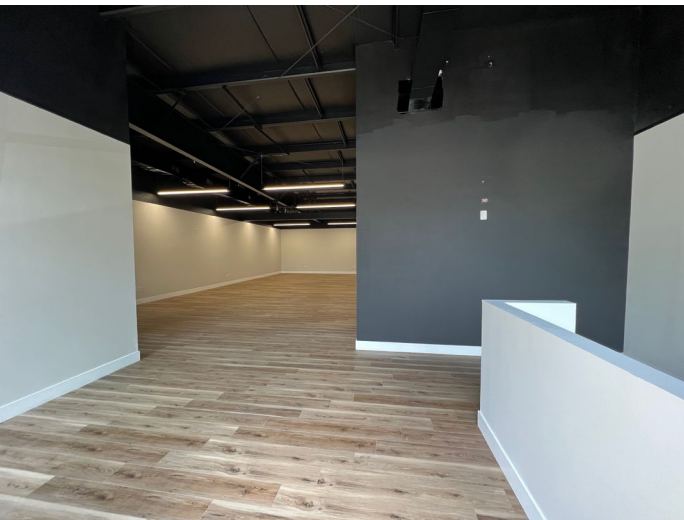
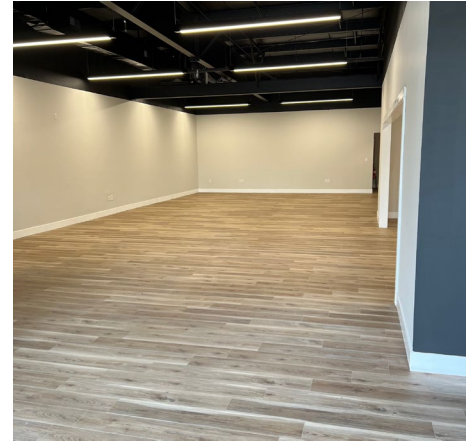
COMMERCIAL REAL ESTATE SALES LEASING, & INVESTMENTS
500 E. NORTH STREET, SUITE F, GREENVILLE, SC 29601

OFFICE/RETAIL SPACE FOR LEASE

+/- 2,700 SF

1054 E. BUTLER ROAD, GREENVILLE, SC 29607

SITE PHOTOGRAPHY



BOBBY HINES | (864) 313-4815
BOBBYHINES@SPENCERHINES.COM

No warranty or representation, expressed or implied, is made to the accuracy of the information contained herein, and the same is submitted subject to errors, omissions, change of price, rental or other conditions, imposed by the principles.





SPENCER/HINES PROPERTIES

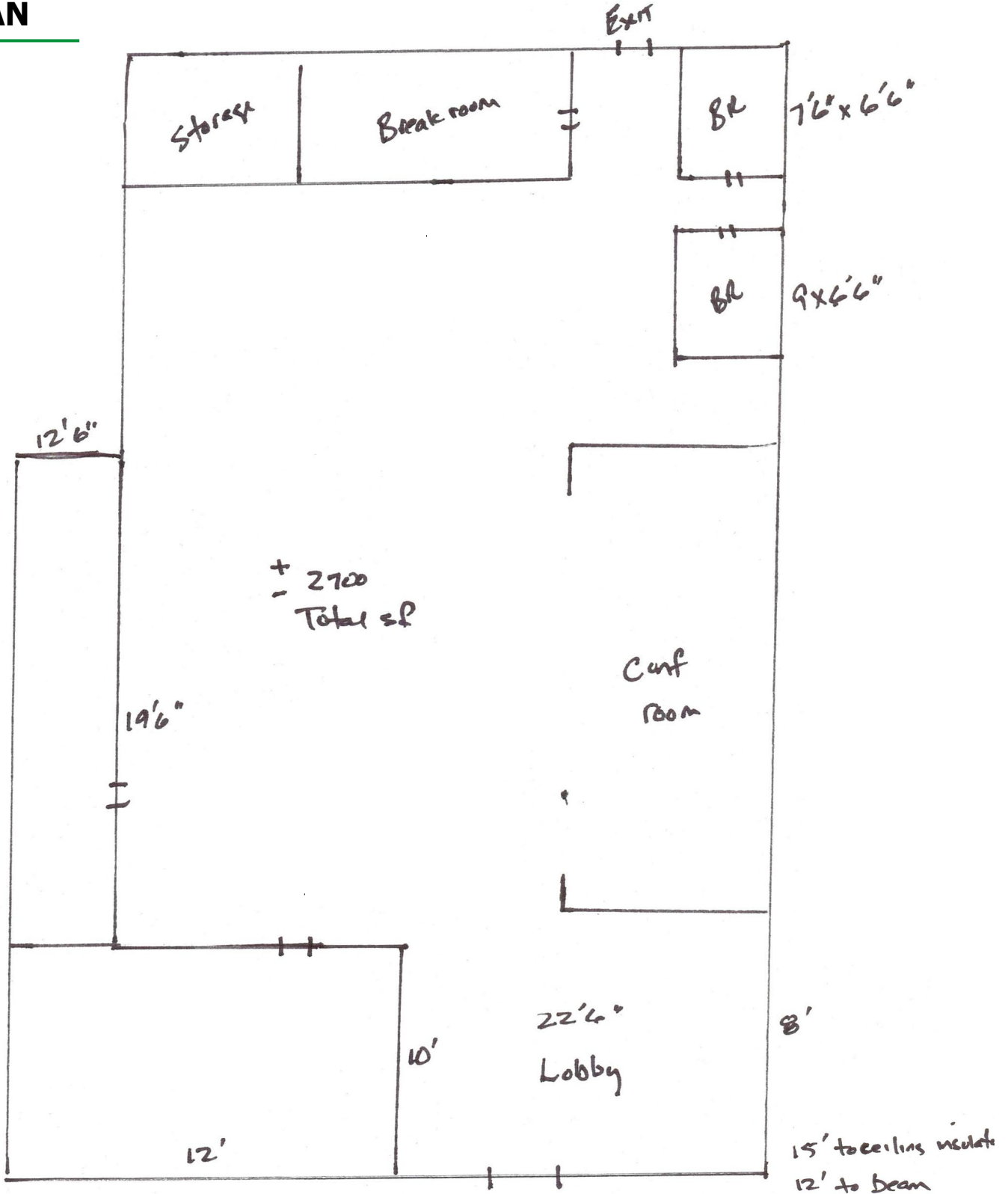
COMMERCIAL REAL ESTATE SALES LEASING, & INVESTMENTS
500 E. NORTH STREET, SUITE F, GREENVILLE, SC 29601

OFFICE/RETAIL SPACE FOR LEASE

+/- 2,700 SF

1054 E. BUTLER ROAD, GREENVILLE, SC 29607

FLOORPLAN



CONTACT

BOBBY HINES | (864) 313-4815
BOBBYHINES@SPENCERHINES.COM

No warranty or representation, expressed or implied, is made to the accuracy of the information contained herein, and the same is submitted subject to errors, omissions, change of price, rental or other conditions, imposed by the principles.

