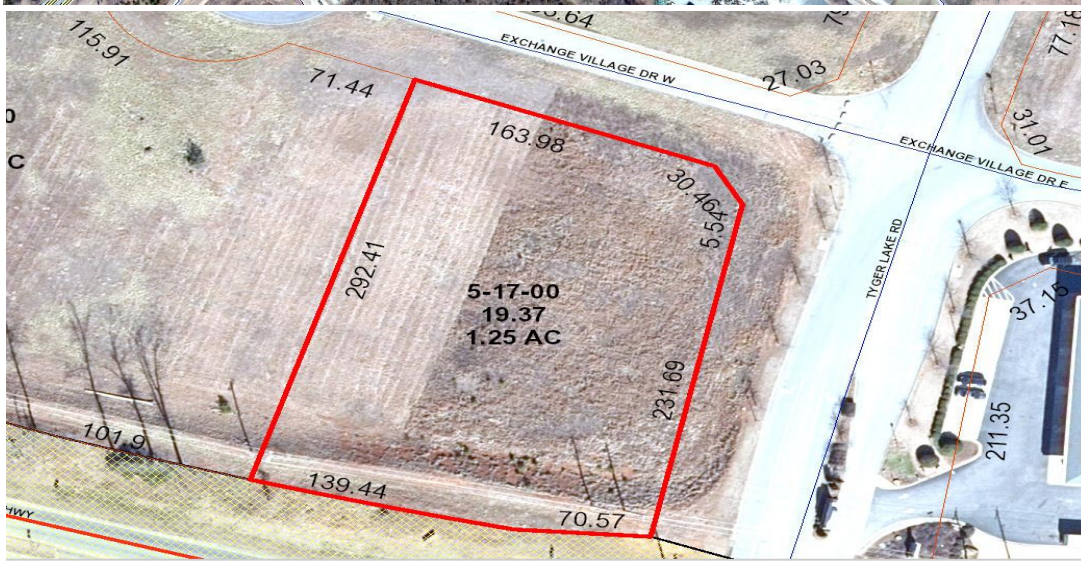
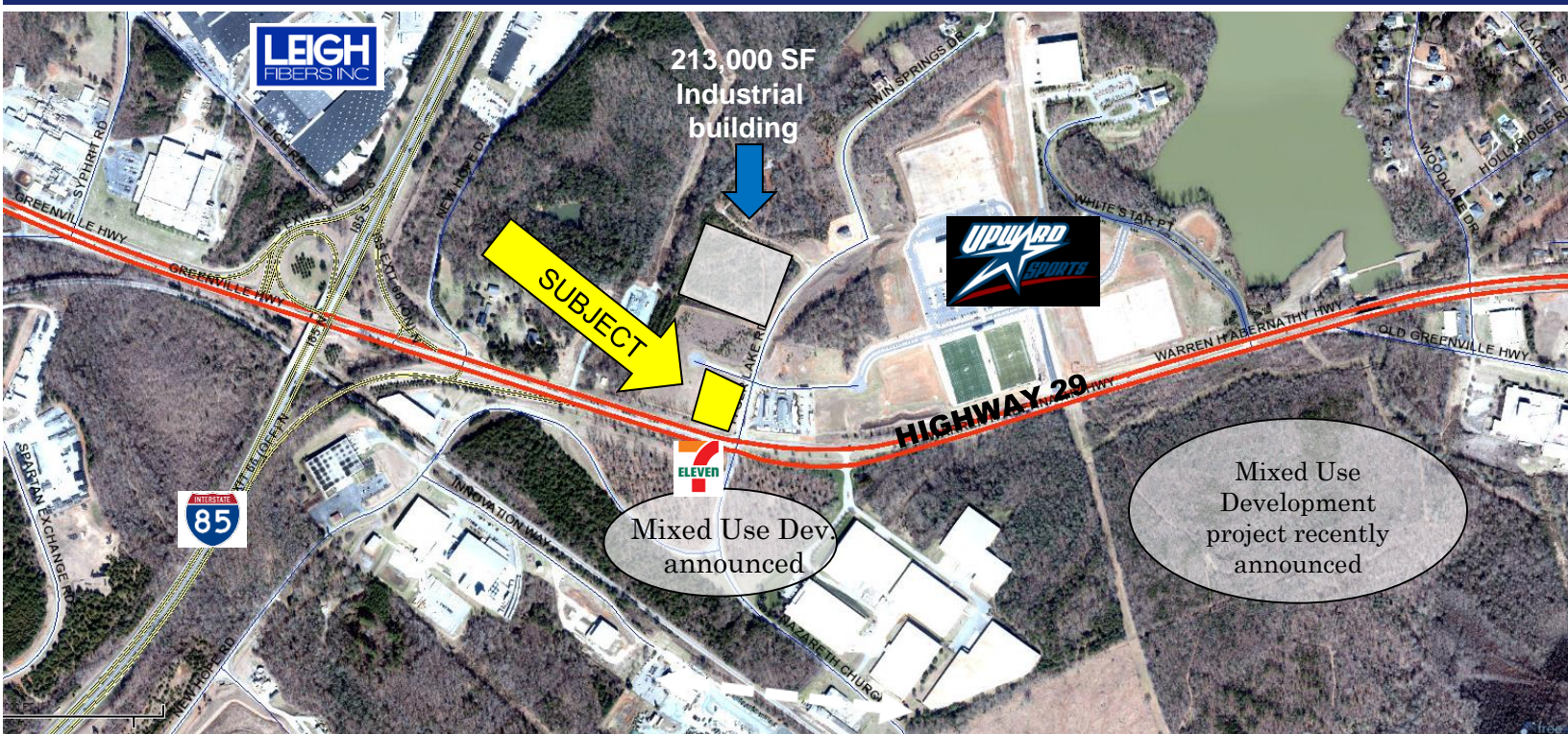


Highway 29 & Tyger Lake Road
Spartanburg, SC 29301



- 1.25± acres located on Highway 29
- 210'± road frontage; 292'± depth
- Adjacent to the Upward Sports Complex
- Conveniently located approximately ½ mile from I-85.
- Perfect location for restaurant, fast food, or convenience store
- 213,000± SF industrial building behind subject property.
- Mixed-Use Development project announced recently across from and below subject property.
- Spartanburg County Tax Map # 5-17-00-019.37
- All utilities to site

Andy Hayes 864-706-0189
ahayes@spencerhines.com

CuStar
POWERBROKER

CONTACT

Ben Hines 864-542-4777
benhines@spencerhines.com

CCIM CCIM Institute
COMMERCIAL REAL ESTATE

WWW.SPENCERHINES.COM

COMMERCIAL REAL ESTATE SALES, LEASING, & INVESTMENTS
380 S. Pine Street, Spartanburg, SC - 864.583.1001

No warranty or representation, expressed or implied, is made to the accuracy of the information contained herein, and the same is submitted subject to errors, omissions, change of price, rental or other conditions, imposed by the principles.

SALE PRICE: \$650,000

