

E. Main Street – 1.6 acres
Spartanburg, SC 29307



- 1.6± acres located across from Lowe's on the dynamic eastside of Spartanburg
- Ease of ingress & egress with access to a traffic signal
- Great demographics – over 1/3 of Spartanburg County within a five mile radius.
- Spartanburg County Tax Map# 7-09-11-010.00; 7-09-0-11-001.01
- Zoned B-1
- Over 22,000 cars per day
- Highly visible with 242' of road frontage
- Owner will consider build-to-suit

Sale Price: \$1,200,000

Demographics	1 mile	3 mile	5 mile
Population	4212	30,598	67,344
Households	2063	13,294	27,418
Average HH Income	\$57,904	\$65,297	\$55,597

Ben Hines, CFP, CCIM
380 S. Pine Street
Spartanburg, SC 29302
Tel 864.583.1001
C 864.542.4777
Fax 864.585.6188
benhines@spencerhines.com
www.spencerhines.com

Lynn Spencer, CCIM
380 S. Pine Street
Spartanburg, SC 29302
Tel 864.583.1001
C 864.542.4946
Fax 864.585.6188
lynnspencer@spencerhines.com
www.spencerhines.com

Andy Hayes, Principal
380 S. Pine Street
Spartanburg, SC 29302
Tel 864.583.1001
C 864.706.0189
Fax 864.585.6188
ahayes@spencerhines.com
www.spencerhines.com



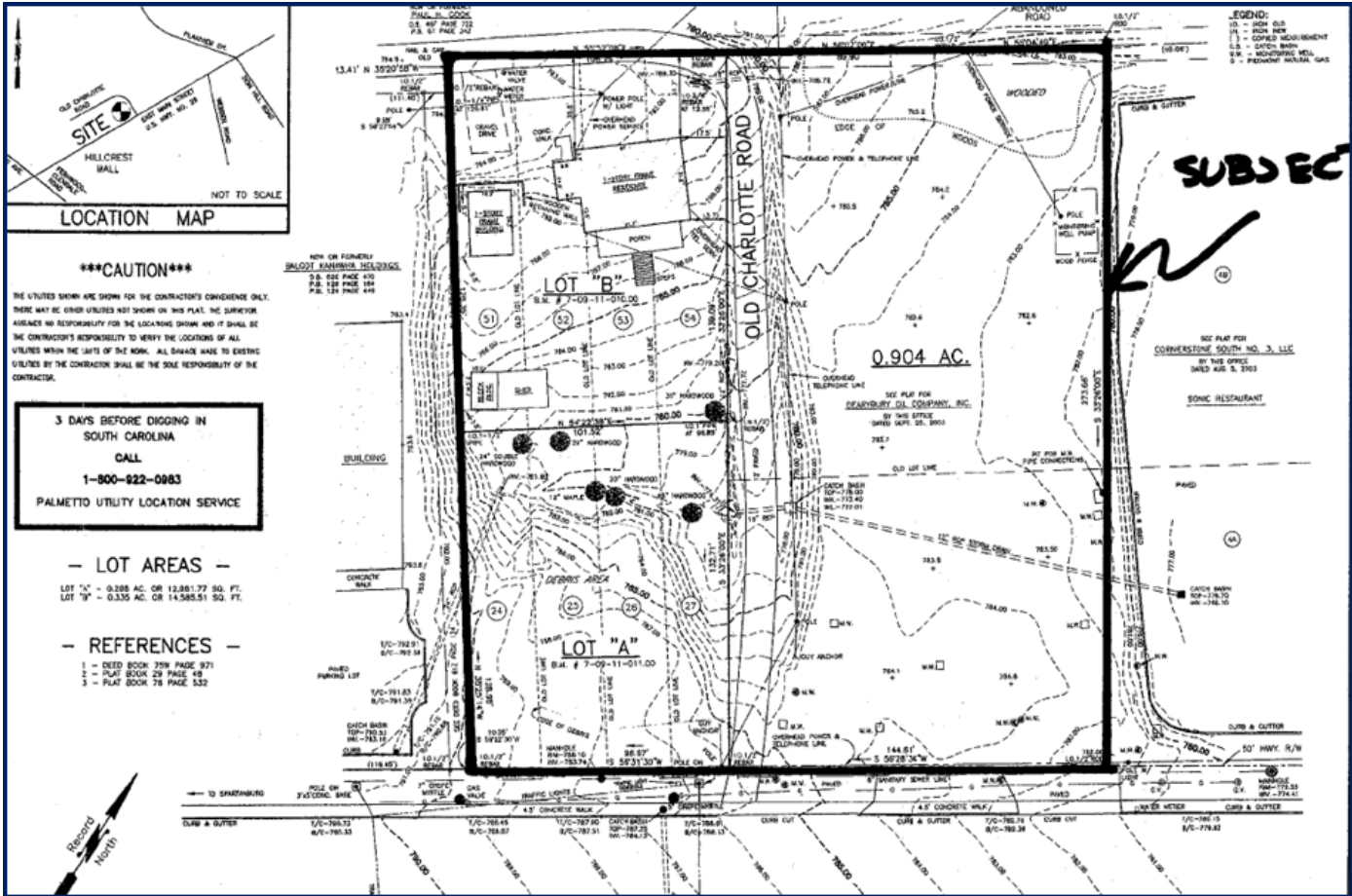


SPENCER/HINES

PROPERTIES

OUTSTANDING DEVELOPMENT OPPORTUNITY

E. Main Street – 1.6 acres
Spartanburg, SC 29307



Ben Hines, CFP, CCIM
380 S. Pine Street
Spartanburg, SC 29302
Tel 864.583.1001
C 864.542.4777
Fax 864.585.6188
benhines@spencerhines.com
www.spencerhines.com



Lynn Spencer, CCIM
380 S. Pine Street
Spartanburg, SC 29302
Tel 864.583.1001
C 864.542.4946
Fax 864.585.6188
lynnspencer@spencerhines.com
www.spencerhines.com

Andy Hayes, Principal
380 S. Pine Street
Spartanburg, SC 29302
Tel 864.583.1001
C 864.706.0189
Fax 864.585.6188
ahayes@spencerhines.com
www.spencerhines.com